

ENYAMCGREGOR

SPACES

ROGREGORY WAYNE



STUDIO 1

Situated on the second floor, Studio 1 is the largest of the three studios, filled with natural light through the feature ceiling aperture.

- Dimensions: 18m x 15.6m x 5.6m / 3.6 (to beams)
- Main studio entry door: 3m x 2.4m
- Harlequin activity sprung floor with cascade surface (white)
- Natural light through ceiling aperture
- Dimmable LED lights
- Total power rating 3.5kw (16A), three phase power available
- Full range high quality sound system with mini jack connection
- XLR stereo interface for own equipment
- Blackout unavailable
- Air heating and cooling by air handling units
- Wired Data Connection

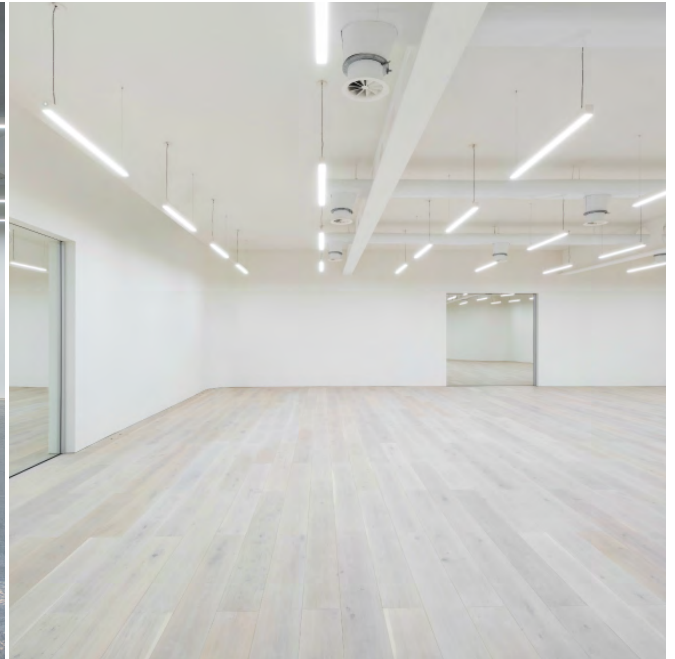
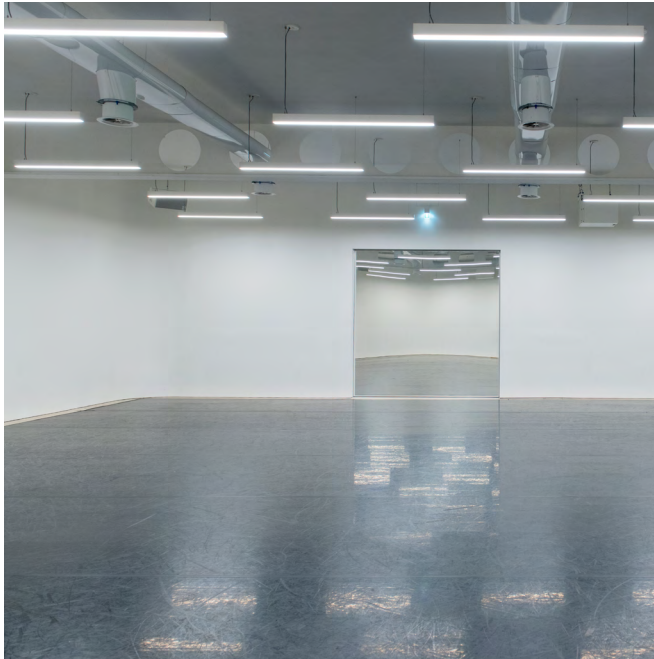


STUDIO 2

An intimate space on the second floor, ideal for small scale photo shoots. Studio 2 can also be purposed as a meeting room, a green room or second location in conjunction with one of the larger studios.

- Dimensions: 13m x 11m x 4m
- Harlequin activity sprung dance floor (grey)
- White oiled oak top surface option available on request only**
- Natural light through skylights
- Window overlooking open gallery space
- Total power rating 3.5kw (16A)
- High quality sound system (boom bar)
- XLR stereo interface for installation of own sound system
- Available for Green Room
- Air heating and cooling by air handling units
- Wired Data Connection

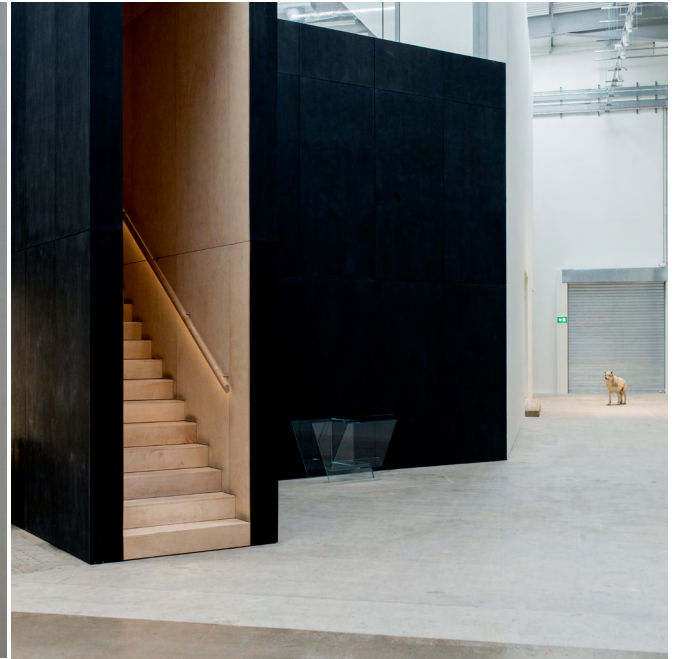
ROGREGORY



STUDIO 3

Located on the ground floor with close access to the freight lift for get-in and large deliveries, Studio 3 features four mirrored doors and provision for full blackout.

- Dimensions: 15.6m x 15.6m x 5.6m / 3.6m (to beams)
- 4 x entry doors: 3m x 3m
- Harlequin activity sprung dance floor (black)
- White oiled oak top surface option available on request only**
- 4 x mirrored doors
- Dimmable LED lights
- Total power rating 3.5kw (16A), three phase power available
- Full range high quality sound system with mini jack connection
- XLR stereo interface for own equipment
- Access ramps at South and East entrances to Studio 3
- Black out available
- Air heating and cooling by air handling units
- Wired Data Connection



GALLERY SPACE

This unique ground floor space is a versatile location for a variety of filming and photography projects as well as different types of events. Recent hires include television networks, major commercial brands and high-profile launch events.

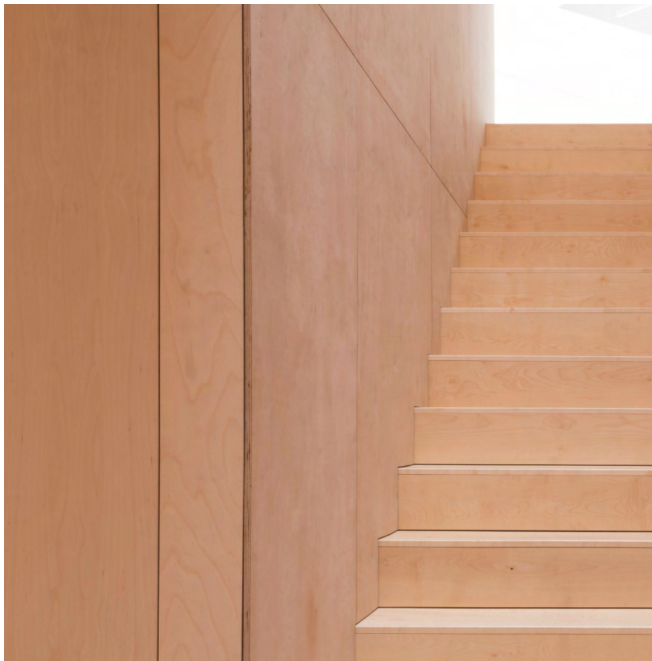
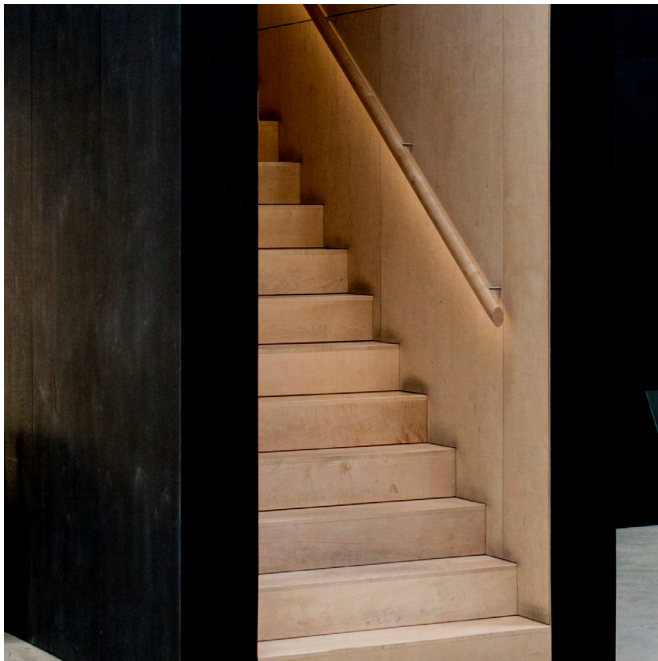
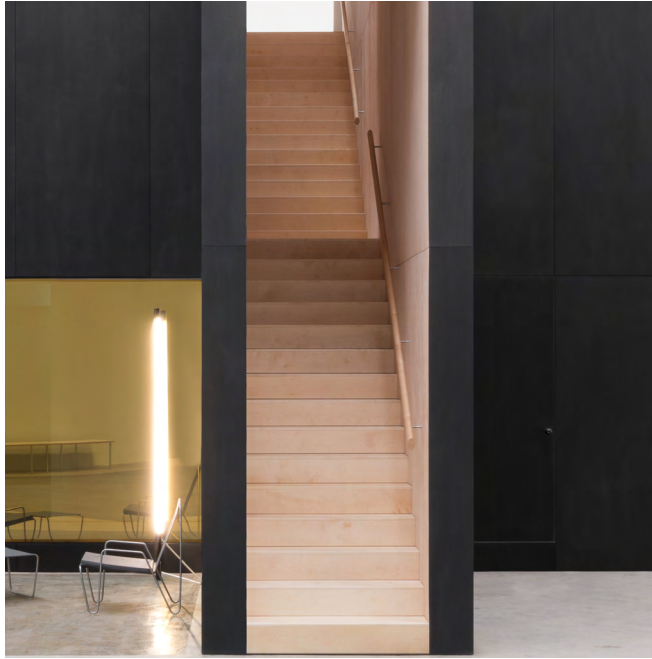
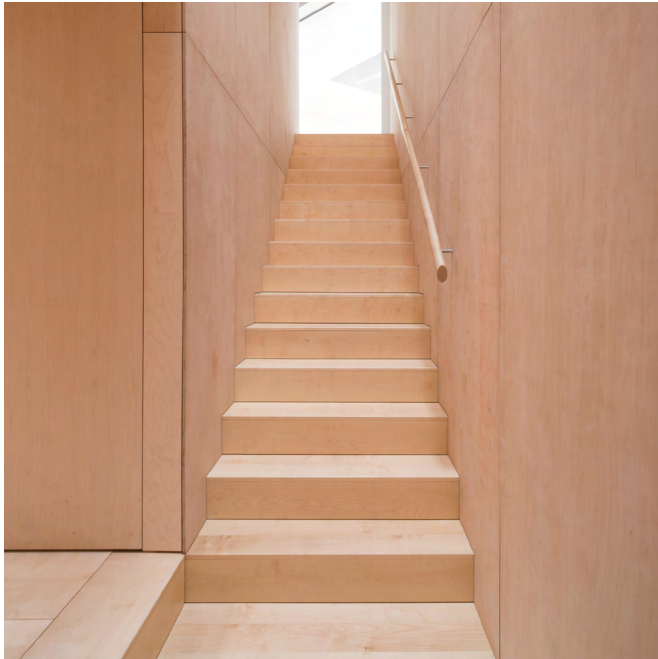
- Dimensions: 37m x 17m x 11m
- Total power rating 3.5kw (16A), three phase power available
- Roller Shutter (3m x 3.6m)
- Air heating and cooling by air handling units
- Wired Data Connection



OBSIDIAN TERRACE

The striking architecture of the Obsidian Terrace makes it attractive for small scale photo shoots. It can also be utilised for wardrobe fittings and make-up, as well as functioning as a working office space and meeting room.

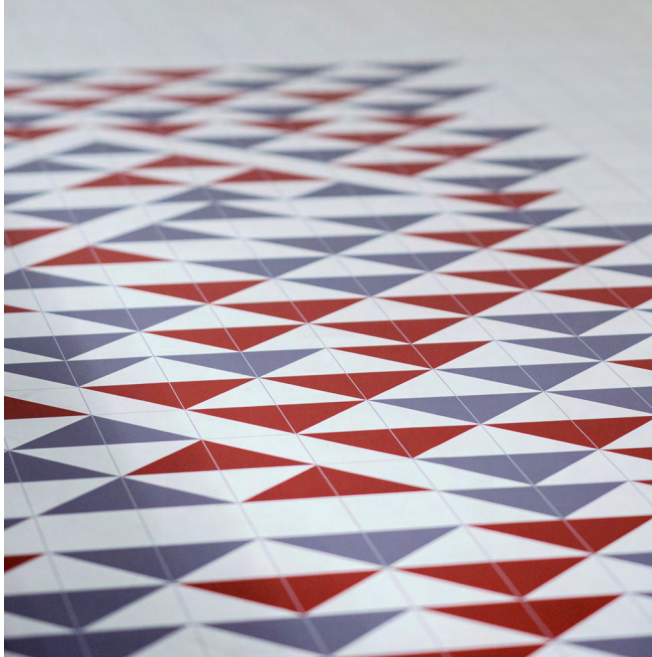
- Dimensions: 6.23m x 4.66m
- Total power rating 3.5kw (16A)
- Air heating and cooling by air handling units
- Wired Data Connection
- Access to the Obsidian Corridor on the first floor



WOODEN STAIRS

This beautiful wooden staircase leading up from the Gallery Space to the Obsidian Terrace and Studio 1 is ideal for small scale photo shoots. It can be hired both separately or in conjunction with other spaces.

- 10.73m x 1.04m
- Air heating and cooling by air handling units
- Wired Data Connection



ALBERS ROOM

The Albers Room sits on the ground floor and features a bespoke floor based on an artwork by Bauhaus artist Anni Albers.

This room is perfect for meetings, table-reads or as a break-out space.

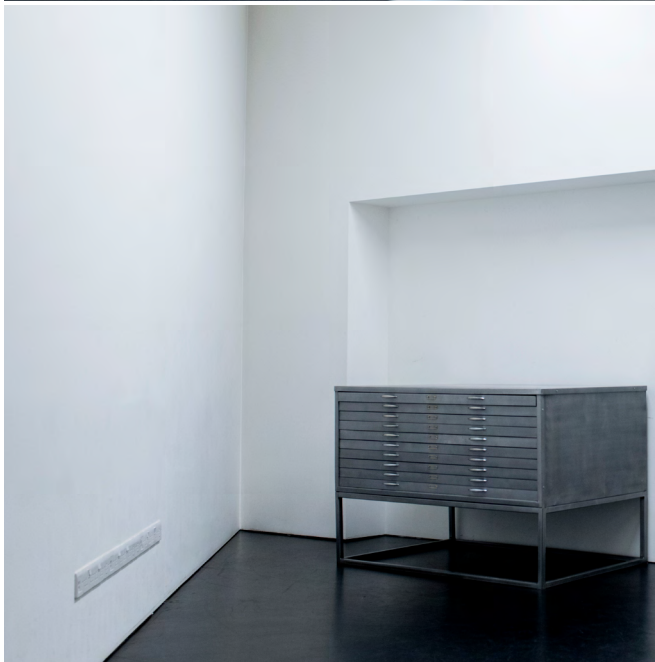
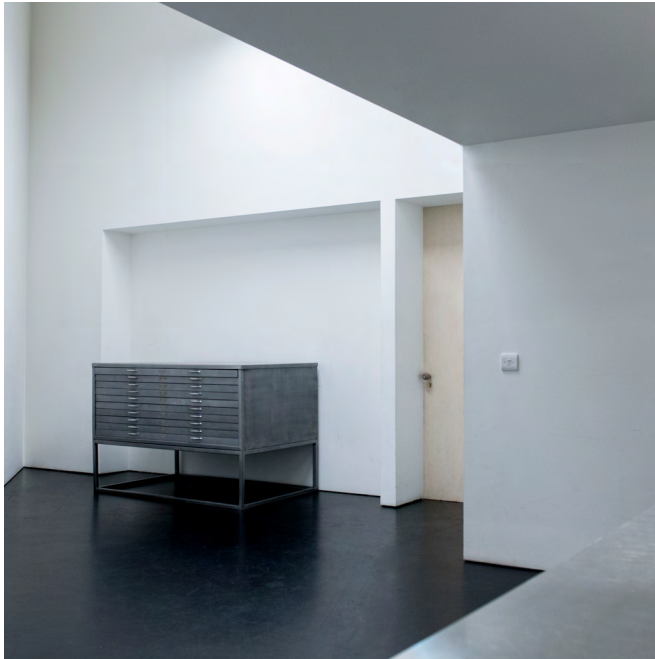
- Dimensions: 5m x 6m x 3m
- Total power rating 3.5kw (16A)
- Air heating and cooling by air handling units
- Wired Data Connection



TERRACE & CARAVAN

An outdoor area, featuring an airstream caravan which can be utilised for informal meetings, interviews, private green room, and as a break-out space.

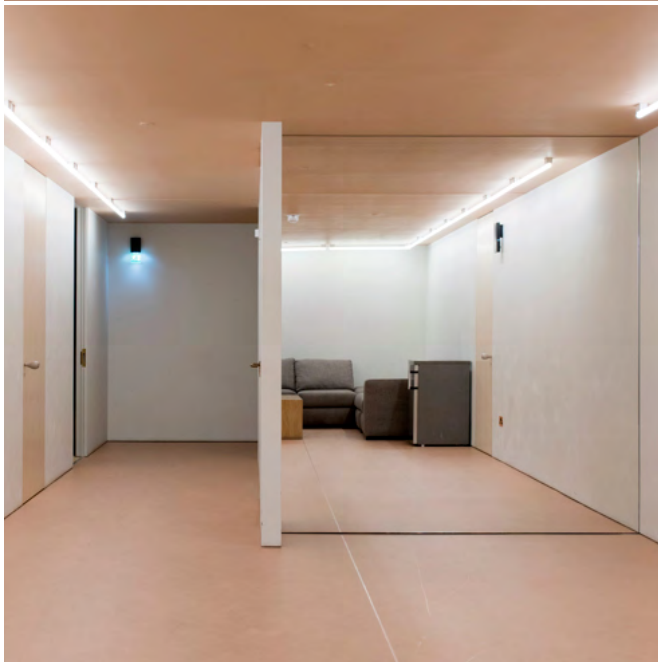
- Terrace Dimensions: 6.38m x 3.48m
- Caravan Dimensions: 5.45m x 1.61 m
- Access to the caravan on request only**
- Dyson fan available
- Wired Data Connection



PRODUCTION SPACE

Situated next to Studio 3, the Production Space can be utilised in a variety of ways such as a Production Room, Green Room, Wardrobe or as a break-out space.

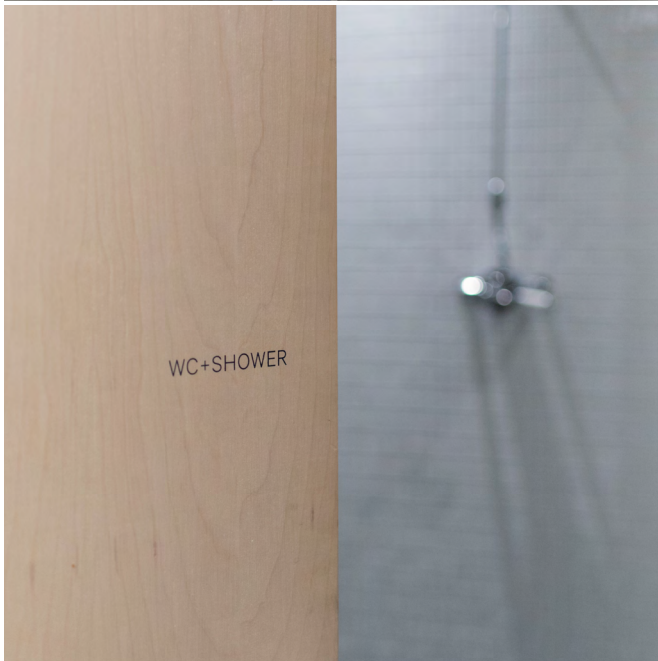
- Dimensions: 7.3m x 3.7m x 4.8m
- Total power rating 3.5kw (16A)
- Air heating and cooling by air handling units
- Wired Data Connection



GREEN ROOM

Located on the first floor this space can be utilised for dressing room, green room facilities as well as wardrobe and make-up prep spaces.

- Dimensions: 13.73m x 4.76m
- Total power rating 3.5kw (16A)
- Air heating and cooling by air handling units
- Wired Data Connection



GUEST DRESSING ROOM

Located on the ground floor this space can be utilised for dressing room, as well as make-up prep area.

- Dimensions: 6.79m x 6.35m
- 2 x wcs
- 3 x shower/wc room,
- 1 x accessible shower/wc.
- 10 x lockers